



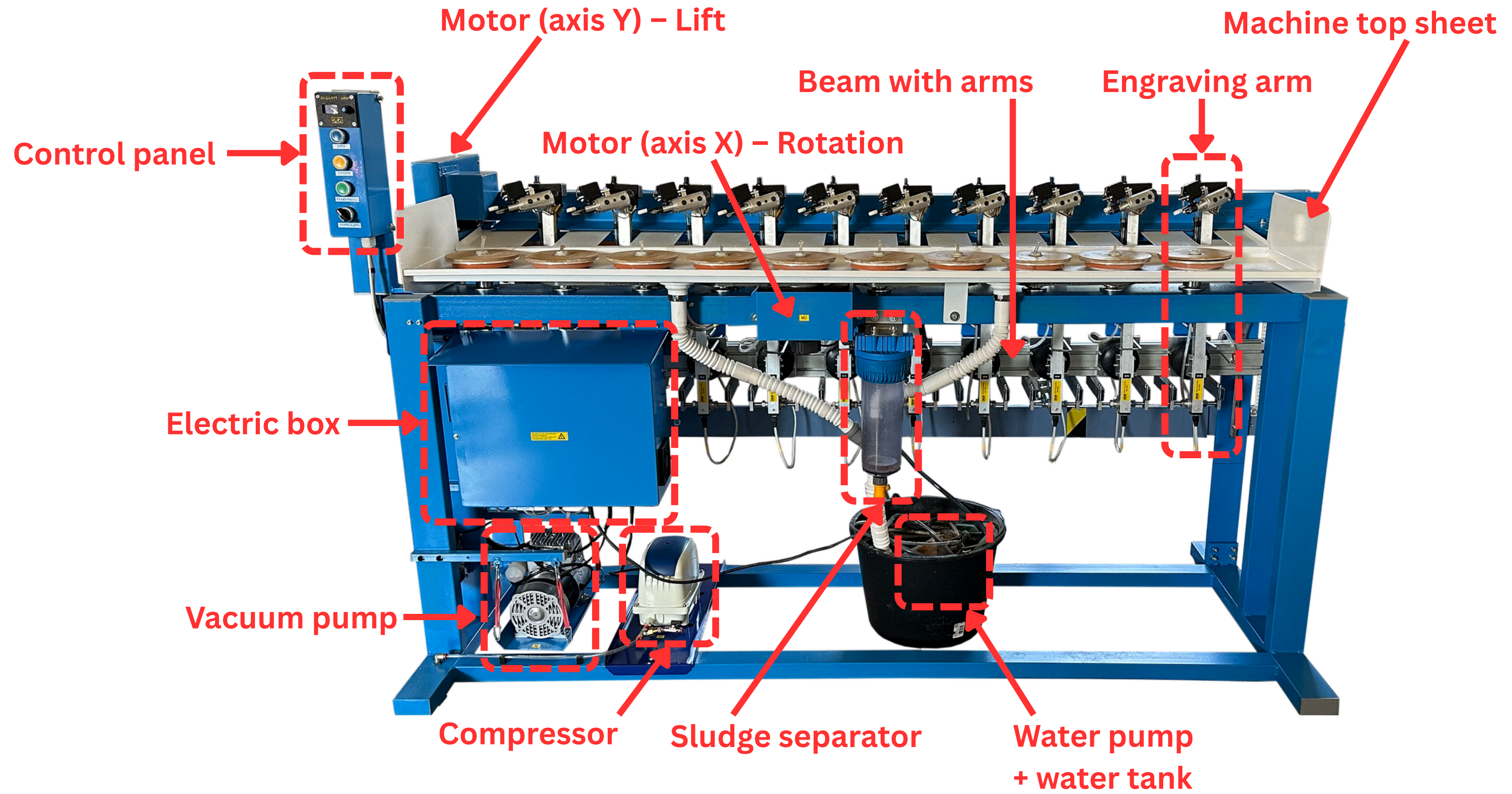
Slovak Art Glass Automatic

SAGARYT SGA

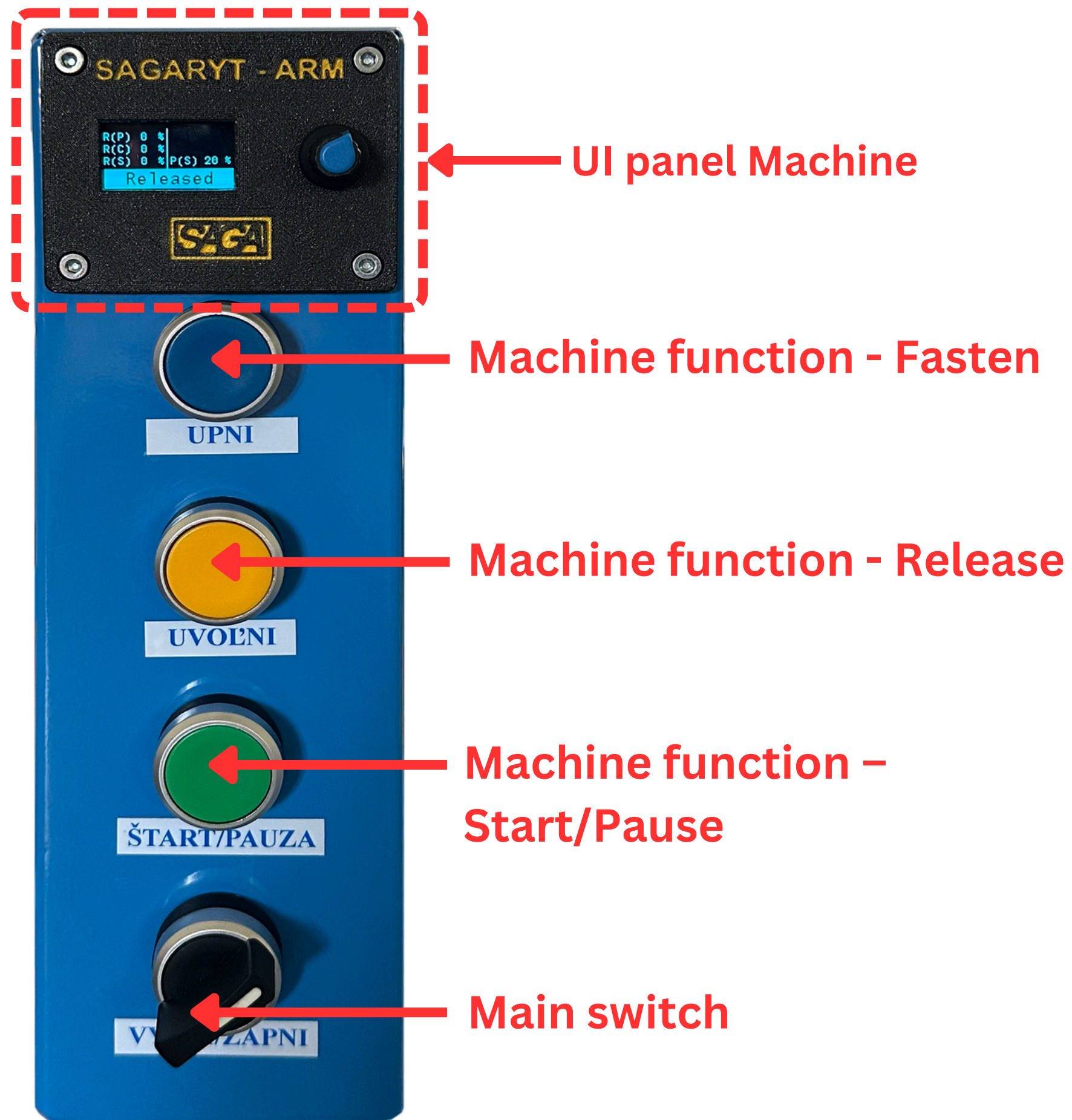
First steps



Legend – Machine



Machine in the photo: SAGARYT SGA 10PS – 150



Machine function - Fasten:

- Starts the vacuum pump
- Starts the compressor
- Will turn on the water

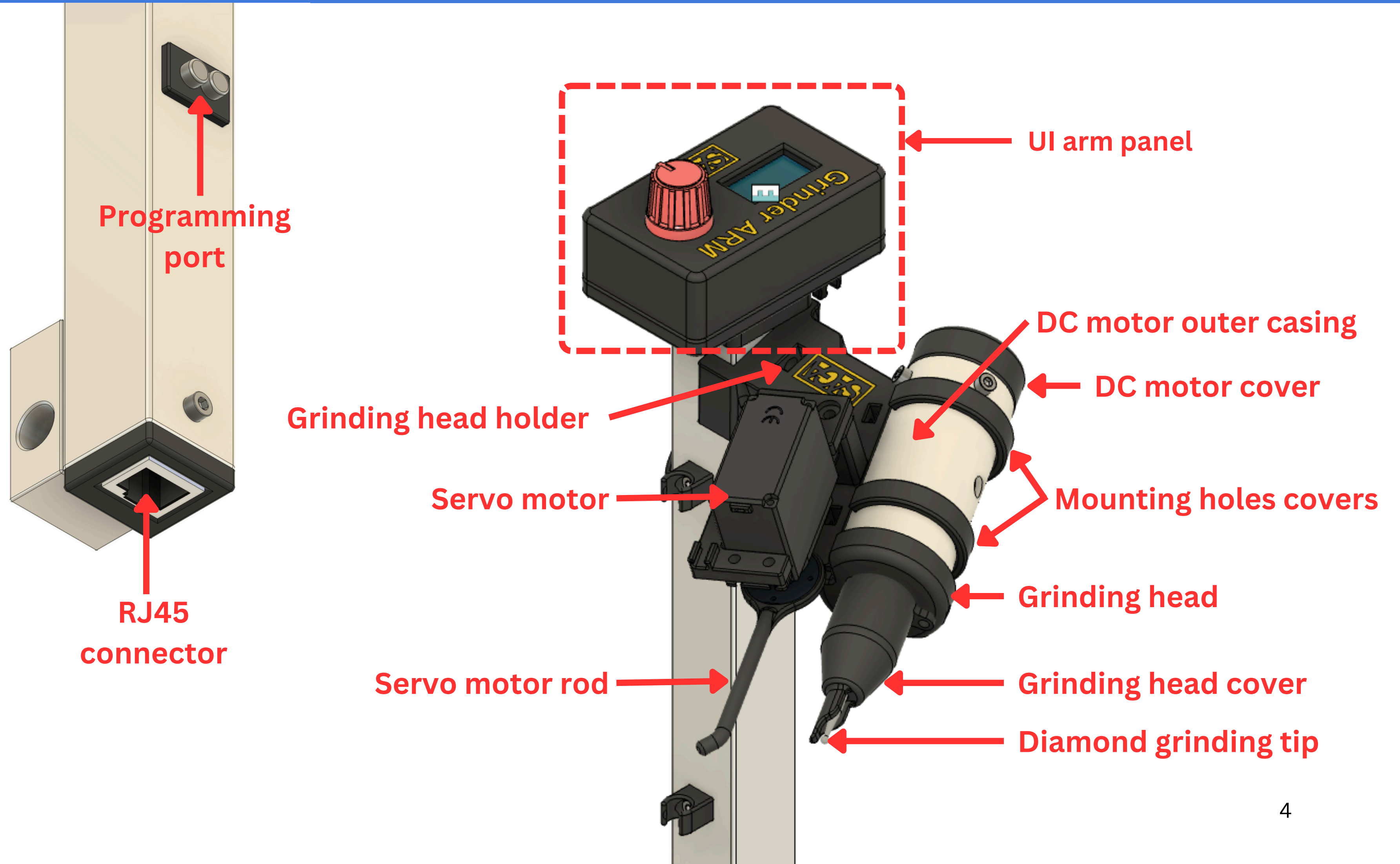
Machine function - Release:

- Turns off the vacuum pump
- Turns off the compressor
- Turns off the water

Machine function - Start/Pause:

- Starts the engraving process
 - Pauses the engraving process
- * It is only possible to pause the engraving process at the end of the section.

Legenda - Engraving arm



Step 1:

Upon delivery of the SAGARYT machine, it is necessary to check the integrity of the shipment to ensure that it has not been damaged during transport.

Step 2:

Unpack the machine and check whether:

- The machine shows no signs of damage (cracks, broken components)
- Packaging, whether the contents match the packing list
- Checking the wiring and connectors

Step 3:

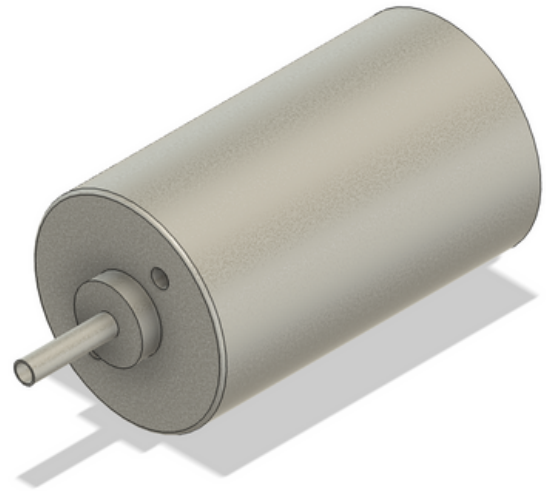
Removing the fixation used during machine transportation, for the Y axis - (beam with arms). It must be possible to move the beam manually even with a small amount of force.

Step 4:

Machine plate rotation test. The plates must be able to be rotated manually with a small amount of force.

Accessories - Spare parts

(2pcs) DC motor + PCB



(2pcs) Servo motor rod



(2pcs) Grinding head cover



(5pcs) Diamond grinding tip 2,5mm



(1m) Connecting tube



Accessories – Machine accessories

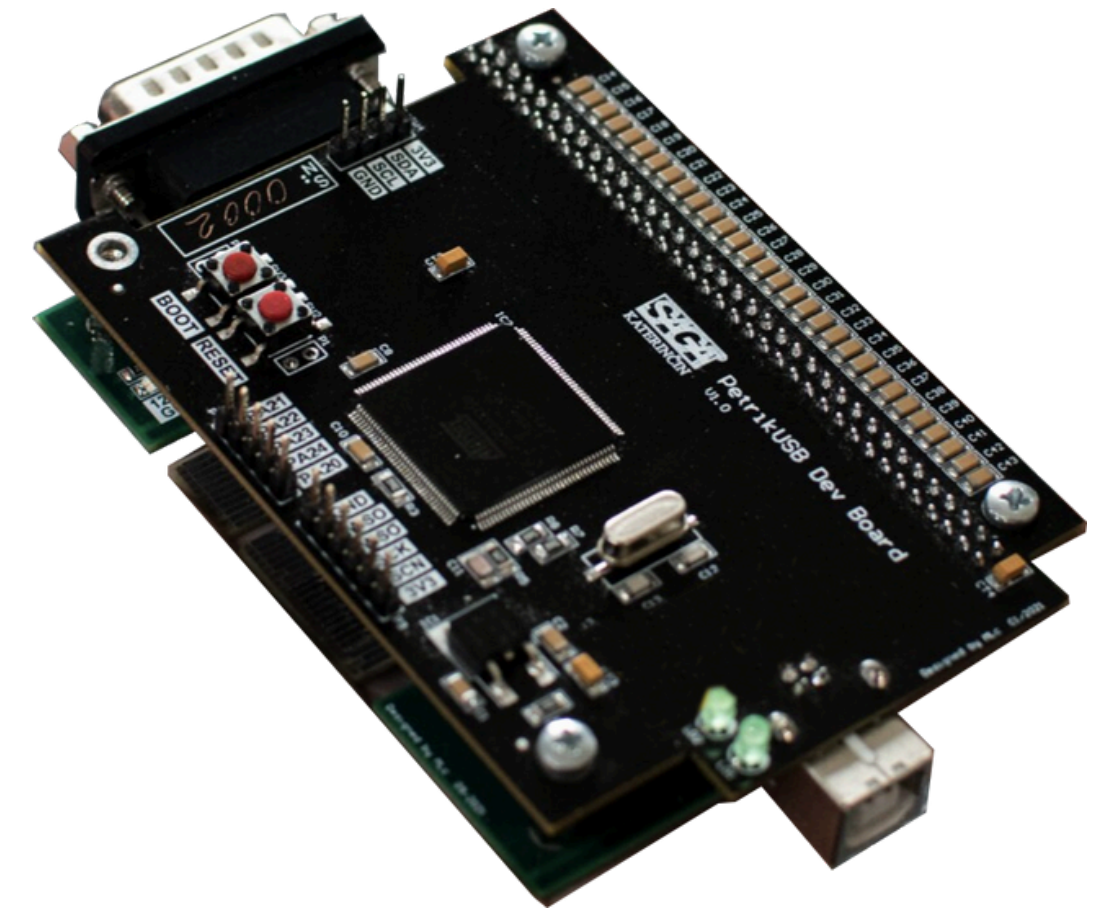
(1pc) Monitor



(1ks) Computer



(1pc) USB Control board



*** pictures are for illustration purposes only, except for the control board.**

Step 5:

Unpacking and connecting the computer with the monitor.

***recommended distance of the work desk with the computer is up to 1m from the machine.**

Step 6:

Unpacking the USB Control Board from the antistatic packaging.

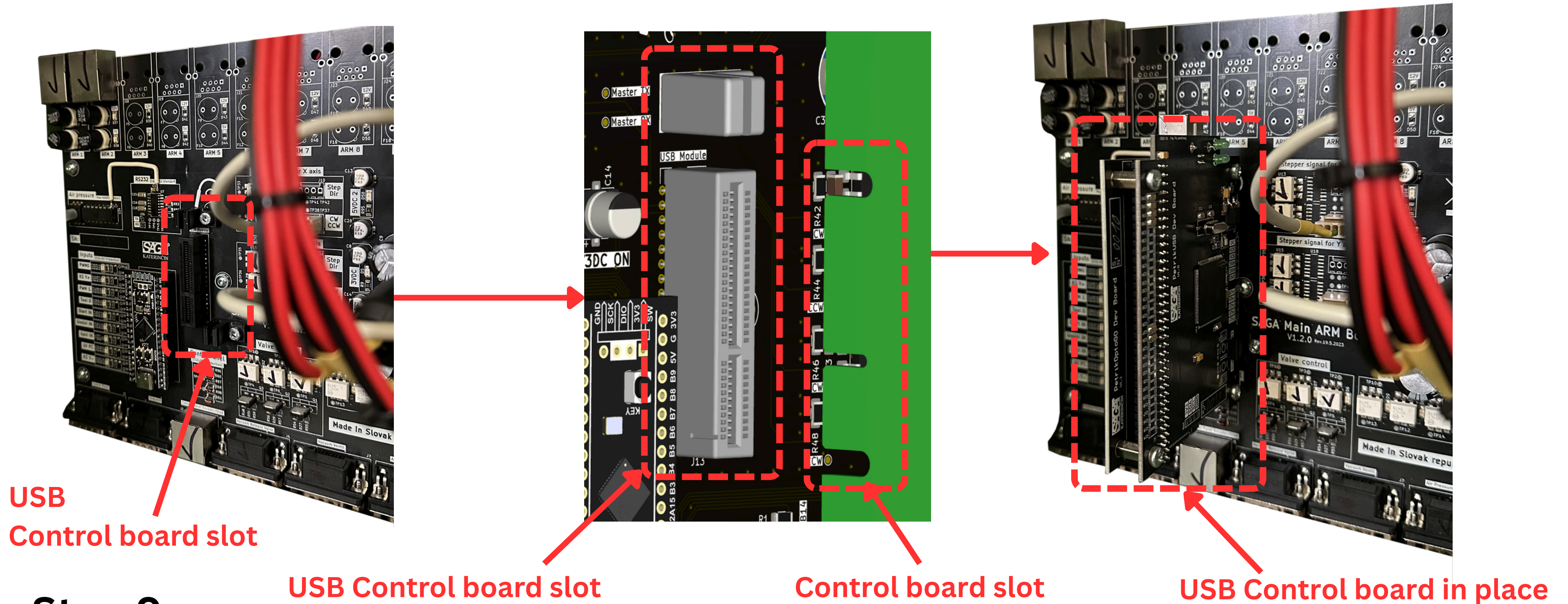
Step 7:

Unscrewing the Allen screws of the electrical box (3 pcs) and opening it.



Step 8:

Inserting the USB Control board into its slot



Step 9:

Inserting the USB cable into the USB connector of the control board.

Step 10:

Plugging the machine's USB cable into the computer.

Step 11:

Connecting the machine to the 230 V AC network.

Step 12:

Turn on the machine with the main switch and wait for the machine to initialize (5s).

***during initialization, the vacuum pump starts and parks the machine's grinding arms in the parking position.**

Step 13:

Test of the FASTEN/RELEASE functions of the machine and functionality check of the:

- Compressor
- Vacuum pump
- Water pump

Step 14:

Opening the Pantographer program in which to test:

- Beam movement up/down (axis Y)
- Plates movement CW/CCW (axis X)
- Tool test (Servo motor+DC motor)

Step 15:

After successful testing, the machine is ready for engraving process.